

DATA SHEET

Concrete/Rock Specimen Grinding Machine



Grinding machine (55-C0201/B)

General description

Used to grind and polish concrete specimens, natural stones, ceramic materials, etc. Proposed in two versions:

- 55-C0201/B standard version in which the lateral displacement of the grinding head is motor operated and actuated by a push button.
- 55-C0201/C Automatic version in which the lateral displacement is fully automatic and controlled by travel limit switches.

All the other characteristics are identical.

The cube and cylinder specimens can be easily locked on the table and the grinding head, 330 mm dia., can be laterally moved either manually or automatically in both directions so, the only manual operation requested is the lowering of the grinding head by the top hand wheel. The machine is supplied complete with safety chip guard that, when removed, stop automatically the machine, with coolant tank, motor pump and one set of abrasive sectors. Diamond grinding sectors are available on request (see accessories). The machine is supplied complete with clamping element for 100, 150 and 200 mm cubes. Clamping devices for cylinders and device for dry grinding procedure are also available on request (see accessories). The 45-D0534/B and 45-D0534/C Core face preparation jigs can be easily fitted by the clamping element supplied with the machine.

Main features

- To grind concrete specimens, natural stones, tiles, block pavers, ceramic materials etc.
- Large base table for grinding contemporaneously up to three 100 mm cubes, or three 150 mm cubes, or two 200 mm cubes and concrete/tile blocks of various sizes (see drawing of working area).
- For cylinders up to dia. 160x320 mm
- Motorized lateral displacement in both directions by pushbutton or totally automatic with the 55-C0201/C version
- Safety guard with door locking switch conforming to CE
- Complete with clamping elements for cubes
- Suitable for dry grinding procedure. See accessories
- Diamond impregnated sectors available as alternative to abrasive
- Ideal for surface preparation of rock samples using the accessory 45-D0534/B and 45-D0534/C

Standards

DATA SHEET

- EN 12390-2
- ASTM D4543

Specifications

Table dimension: 775x280 mm

Grinding wheel dia: 330 mm

Max vertical daylight: 350 mm

Min vertical daylight: 145 mm

Max specimen size: 200 mm cubes and 160x320 mm cylinders

Machined surfaces: see schematic representation

Grinding head stroke: 205 mm

N° of grinding segments: 10

Grinding wheel speed: 1400 r.p.m.

Automatic cross feed in both directions (model 55-C0201/C only)

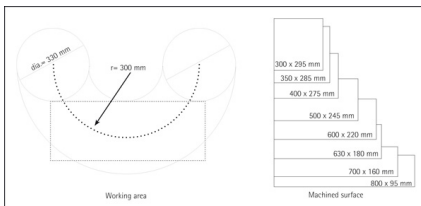
Safety guard with door locking switch conforming to CE

Total power: 2200 W

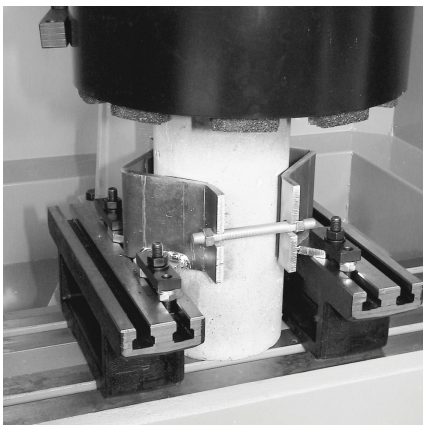
Overall dimensions (Lxwxh): 1200x1020x1640 mm

Weight approx.: 350 kg

Gross weight approx.: 415 kg



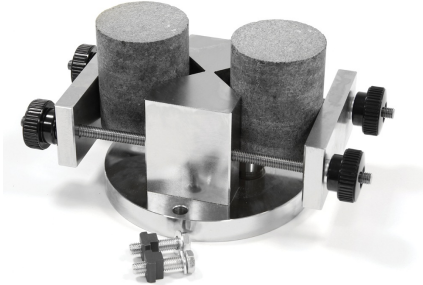
Working area and machined surface layout



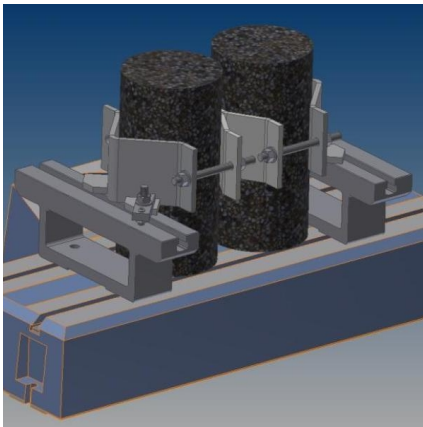
Detail of grinding machine clamping device for cylinder (55-

DATA SHEET

C0201/B4)



2-places core face preparation jig. 45-D0534/C

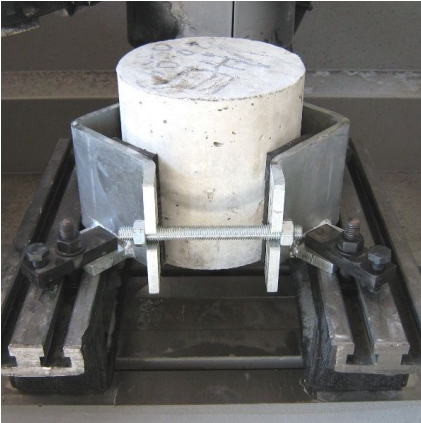


Grinding machine clamping device for 2 cylinders (55-C0201/B6 and 55-C0201/B4)

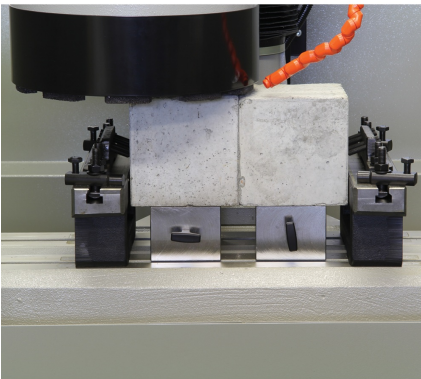


Detail of dressing tool

DATA SHEET



Detail of grinding machine clamping device for cylinder (55-C0201/B4)



Detail of grinding machine clamping device for cubes and prisms

Products

55-C0201/B

Semiautomatic grinding machine for cubes, cylinders, blocks, cores and rock specimens. Complete with 10 abrasive sectors and clamping system for cubes and prisms. 380V, 50Hz, 3ph.

55-C0201/BY

Semiautomatic grinding machine for cubes, cylinders, blocks, cores and rock specimens. Complete with 10 abrasive sectors and clamping system for cubes and prisms. 380V/60Hz/3ph.

55-C0201/BZ

Semiautomatic grinding machine for cubes, cylinders, blocks, cores and rock specimens. Complete with 10 abrasive sectors and clamping system for cubes and prisms. 220V, 60Hz, 3ph.

55-C0201/C

Grinding machine with automatic lateral displacement of the grinding head. Suitable for cubes, cylinders, blocks, cores and rock specimens. Complete with 10 abrasive sectors and clamping system for cubes and prism. 220-380V/50Hz/3ph

55-C0201/CY

Grinding machine with automatic lateral displacement of the grinding head. Suitable for cubes, cylinders, blocks, cores and rock specimens. Complete with 10 abrasive sectors and clamping system for cubes and prism. 380V/60Hz/3ph

55-C0201/CZ

Grinding machine with automatic lateral displacement of the grinding head. Suitable for cubes, cylinders, blocks, cores and rock specimens. Complete with 10 abrasive sectors and clamping system for cubes and prism. 220V/60Hz/3ph

DATA SHEET

Accessories and consumables

32-D0534/B

4-places core face preparation jig for grinding machine series 55-C0201/x and 55-C0202/x. Max core dia. 55 mm

32-D0534/C

2-places core smoothing jig suitable for grinding machines series 55-C0201/x and 55-C0202/x. Core dia. from 50 to 100 mm

55-C0200/100

Clamping device for concrete cylinders from 50 to 100 mm dia. Compatible with grinding machine series 55-C0201/x and 55-C0202

55-C0200/1002

Device for clamping one additional cylindrical specimen from 50 up to 100 mm dia. It shall be used along with accessory 55-C0200/100. Compatible with grinding machine series 55-C0201/x and 55-C0202

55-C0201/B1

Spare set of 10 abrasive sectors for grinding machine series 55-C0201/x

55-C0201/B2

Set of 10 diamond abrasive sectors for grinding machine series 55-C0201/x

55-C0201/B3

Accessory for the use of an aspirator connected to the grinding machine 55-C0201/x, suitable for the dry grinding procedure. Aspirator not included.

55-C0200/160

Clamping device for concrete cylinders from 100 to 160 mm dia. Compatible with grinding machine series 55-C0201/x and 55-C0202

55-C0200/1602

Device for clamping one additional cylindrical specimen from 100 up to 160 mm dia. It shall be used along with accessory 55-C0200/160. Compatible with grinding machines series 55-C0201/x and 55-C0202